

# Heavy-Duty Commercial DURACELL®

— ⊕ TRUS±ED EVERYWHERE® ⊖ —

Heavy Power • Trusted Performance



Heavy-duty power from a name trusted to deliver the day-in and day-out dependability critical for commercial truck and equipment use.

Duracell Commercial batteries have the high cranking performance that brings even the toughest engines to life. They also have the cycling service capabilities to handle the demanding needs for reserve and accessory power.

A durability enhanced construction and special features, like the secure anchor-bonding of the power producing components, prevent vibration damage to protect the battery's superior performance and life.

Commercial vehicle or equipment owners shouldn't settle for anything less than Duracell's trusted service and heavy-duty starting power.

# Duracell Heavy-Duty Commercial Batteries

GROUP NO.	PART NO.	PERFORMANCE LEVEL		FREE REPLACEMENT WARRANTY	MAXIMUM OVERALL DIMENSIONS						FOOTNOTES
		CCA @ 0°F	REF. CA.		Length		Width		Height		
					inch	mm	inch	mm	inch	mm	
<b>6-VOLT DURACELL® HEAVY-DUTY COMMERCIAL</b>											
1	HP1	640	800	12 MONTHS	9	229	6 7/8	175	8 1/2	222	6,21,25
<b>12-VOLT DURACELL® HEAVY-DUTY COMMERCIAL</b>											
30H	D30H	650	800	12 MONTHS	13	330	6 7/8	171	9 1/2	241	6,19,21,22
31	HP31	1000	1190	18 MONTHS	13	330	6 7/8	171	9 1/2	241	6,17,19,21,22,X
31	D31X	950	1140	18 MONTHS	13	330	6 7/8	171	9 1/2	241	6,17,19,21,22,X
31	D31	760	910	18 MONTHS	13	330	6 7/8	171	9 1/2	241	6,19,21,22,X
31P	HP31P	1000	1190	18 MONTHS	13	330	6 7/8	171	9 1/2	241	6,17,19,21,22
31P	D31PX	950	1140	18 MONTHS	13	330	6 7/8	171	9 1/2	241	6,17,19,21,22
31P	D31P	760	910	18 MONTHS	13	330	6 7/8	171	9 1/2	241	6,19,21,22
4D	HP4D	1050	1280	12 MONTHS	20 3/4	527	8 1/2	216	10 1/2	257	6,12,17,25
4DLT	HP4DLT	850	1005	12 MONTHS	20	508	8 1/8	206	8 1/8	206	6,12,19,25
8D	HP8DFT	1425	1730	12 MONTHS	20 3/4	527	11	279	10	254	6,12,17,21,22
8D	HP8D	1400	1700	12 MONTHS	20 3/4	527	11	279	10	254	6,12,17,25
<b>12-VOLT DURACELL® HEAVY-DUTY COMMERCIAL SEVERE / DUAL PURPOSE</b>											
31	HP31CS	730	940	18 MONTHS	13	330	6 7/8	171	9 1/2	241	6,19,21,22,43,X
31	D31CS	700	875	18 MONTHS	13	330	6 7/8	171	9 1/2	241	6,19,21,22,43,X

**FOOTNOTES:**

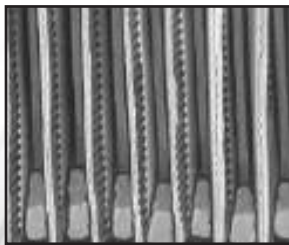
- All batteries have SAE automotive posts except where noted
- All batteries are maintenance-free calcium grids except where noted
- 6. Black cover / Black case
- 12. Hybrid construction
- 17. Includes handle
- 19. Includes lifting ledges
- 21. Anchor lock elements
- 22. Flush manifold vented cover
- 25. With individual vent caps
- 43. Free replacement warranty is 12 months in deep-cycle use and 3 months in full electric vehicle use
- X. 3/8" x 16 stainless steel stud posts

## HEAVY-DUTY COMMERCIAL POWER

- High engine cranking performance – up to 1425 cold cranking amps
- Popular group 31 size fits a vast majority of applications
- Dependable reserve and accessory power
- Rugged vibration resistant construction
- Longer, maintenance-free operation from demineralized electrolyte
- Enhanced crystallization of optimized power plates provides more power-per-pound



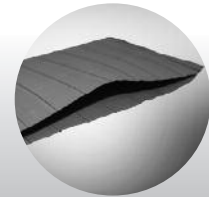
Cycle service batteries have special fiberglass mats to improve deep cycling and long-life performance.



Power producing components are securely anchor-bonded to the case to protect against vibration damage on all group 31's.



Convenient handles or lifting ledges, on most models, significantly enhance transportation and installation of heavy-duty commercial batteries.



**Extended Life Systems**

- Special separators prevent life-robbing electrical shorts
- Protects power producing components



**Optimized Full-Frame Plates**

- Better withstands severe service demands
- Optimizes current transfer



**Enhanced Durability Designs**

- Fortified current carrying components resist vibration
- Maximizes performance throughout battery life

**EAST PENN manufacturing co., inc.**

Lyon Station, PA 19536-0147 • Phone: 610-682-6361 • Fax: 610-682-4781

www.DriveDURACELL.com

E.P.M. Form No. 1854 Rev. 10/12 © 2012 by EPM Printed in U.S.A.

**DURACELL®**

— **TRUS±ED EVERYWHERE®** —

©2012 Duracell. Duracell is a registered trademark of the Gillette Company, used under license. All rights reserved.