

# DURACELL®

## Lawn & Garden

Easy Install • Tough Power

Duracell Lawn & Garden batteries have all of the cranking amps necessary to power tractors and other small utility vehicles across the roughest terrain.

Their easy-to-install, flush cover design not only fits better, but is maintenance-free eliminating the need to add water. A tough, exterior case and cover is ideal for outdoor use resisting damage, even under the roughest conditions. Side vents eliminate acid leaks up to a 45° tilt and keep the battery top dry and corrosion-free.

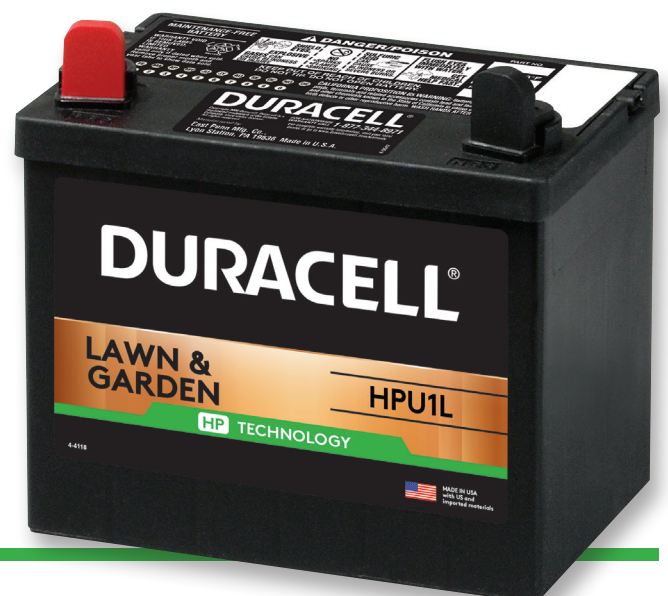
### Duracell HP (High Performance)

line provides another premium quality battery choice that strategically integrates value with high performance to deliver maximum reliability, longevity, and cranking power.

Built to maximize convenience and extend performance, Duracell Lawn & Garden batteries have the quality and dependable starting power that lasts from season to season.

**TRUST IS POWER.**

Visit [www.driveduracell.com](http://www.driveduracell.com) to see the entire line of battery solutions for any application need.



## Duracell Lawn & Garden Batteries

GROUP NO.	PART NO.	PERFORMANCE LEVEL			FREE REPLACEMENT WARRANTY	MAXIMUM OVERALL DIMENSIONS						FOOTNOTES
		CCA @ 0°F	REF. CA.	R.C.		LENGTH		WIDTH		HEIGHT		
						INCH	MM	INCH	MM	INCH	MM	
<b>12-VOLT DURACELL® LAWN &amp; GARDEN</b>												
U1R	HPU1RX	350	430		6 MONTHS	7 3/4	197	5 1/8	130	7 1/4	184	22,Y
U1R	HPU1R	300	370		6 MONTHS	7 3/4	197	5 1/8	130	7 1/4	184	22,Y
U1R	DU1R	230	285		6 MONTHS	7 3/4	197	5 1/8	130	7 1/4	184	22,Y
U1L	HPU1LX	350	430		6 MONTHS	7 3/4	197	5 1/8	130	7 1/4	184	22,Z
U1L	HPU1L	300	370		6 MONTHS	7 3/4	197	5 1/8	130	7 1/4	184	22,Z
U1L	DU1L	230	285		6 MONTHS	7 3/4	197	5 1/8	130	7 1/4	184	22,Z
22NF	D22NF	360	445	58	6 MONTHS	9 3/8	238	5 1/2	140	9	229	12,S

### FOOTNOTES

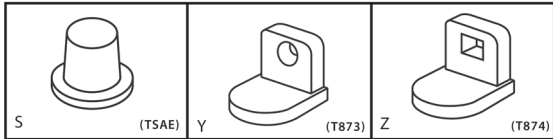
Batteries are maintenance-free calcium grids, except where noted

Batteries manufactured in black polypropylene cases & covers

CA is a reference rating, for comparison only  
CCA conforms to B.C.I. specifications

- 12. Hybrid construction
- 22. Flush manifold vented cover
- S. Automotive Type Post
- Y. Small L terminal with round holes
- Z. Small L terminal with square holes

**PROPOSITION 65 WARNING:** Battery posts, terminals and related accessories contain lead and lead compounds, chemicals known to the State of California to cause cancer and reproductive harm. Batteries also contain other chemicals known to the State of California to cause cancer. WASH HANDS AFTER HANDLING.

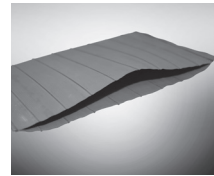


### Same features as premium automotive batteries

- Flush cover design enhances overall battery performance, maintenance, safety, and convenience
- Resistance to vibration and maximum current transfer from fortified posts, straps, and welds
- Performance protection from short-protector separators
- Extended life from ultra-pure electrolyte and full-frame positive and negative plates

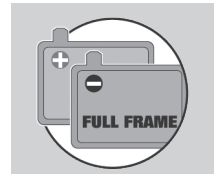
### Extended Life Systems

- Special separators prevent life-robbing electrical shorts
- Protects power producing components



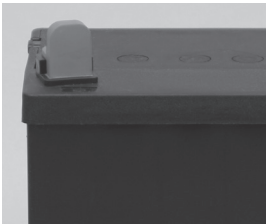
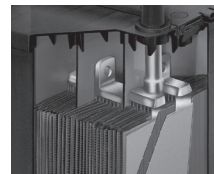
### Optimized Full-Frame Plates

- Better withstands severe service demands
- Optimizes current transfer



### Enhanced Durability Designs

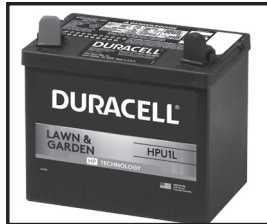
- Fortified current carrying components resist vibration
- Maximizes performance throughout battery life



Flush cover designs on U1 sizes are maintenance-free allowing easy installation, replacement, and cleaning.



Side vents eliminate acid leaks up to a 45° tilt and keep the battery top dry and corrosion-free.



Tough, polypropylene case and cover resists external damage and cracking from demanding outdoor use.



East Penn Manufacturing Co. • Lyon Station, PA 19536-0147

Phone: 610-682-6361 • Fax: 610-682-4781 • www.DriveDURACELL.com

All data subject to change without notice. No part of this document may be copied or reproduced, electronically or mechanically, without written permission from the company.